



INSTALLATION INSTRUCTIONS

<u>Product</u> 7160-1082 GETAC K120 LAPTOP DOCKING STATION	<u>Revision</u> Rev. C	<u>Form</u> INST-833 Printing Spec: PS-001
---	----------------------------------	---

This instruction sheet is for the Getac K120 Laptop docking station only. For instructions on features, set-up, and operation of the computer, please refer to the manual provided by Getac with the computer.

This docking station is designed to be used with a variety of Gamber-Johnson mounting systems. Installation instructions for other Gamber-Johnson products are provided with each individual product.

This instruction sheet is for the following products:

- Item No. 7160-1082-00** No RF (External Power Adapter sold separately)
- Item No. 7160-1082-03** Tri RF (External Power Adapter sold separately)

Getac recommends using the following Power Adapters to power the docking station. They can be ordered from Gamber-Johnson separately.

- 7300-0471** - Auto (12-32 Vdc input) - Available with the docking station as KIT 7170-0694
- 7300-0413** - Isolated (12-32 Vdc input)
- 7300-0412** - Isolated (20-60 Vdc input)
- 7300-0416** - Isolated (72-110 Vdc input)



Product Mounting Disclaimer

Gamber-Johnson is not liable under any theory of contract or tort law for any loss, damage, personal injury, special, incidental or consequential damages for personal injury or other damage of any nature arising directly or indirectly as a result of the improper installation or use of its products in vehicle or any other application. In order to safely install and use Gamber-Johnson products full consideration of vehicle occupants, vehicle systems (i.e., the location of fuel lines, brakes lines, electrical, drive train or other systems), air-bags and other safety equipment is required. Gamber-Johnson specifically disclaims any responsibility for the improper use or installation of its products not consistent with the original vehicle manufactures specifications and recommendations, Gamber-Johnson product instruction sheets, or workmanship standards as endorsed through the Gamber-Johnson Certified Installer Program.

© Copyright 2019 Gamber-Johnson, LLC

If you need assistance or have questions, call Gamber-Johnson at 1-800-456-6868

PRE-INSTALLATION RECOMMENDATIONS

Conduct a "Bench Test"

Gamber-Johnson strongly advises a "bench test" be conducted to verify all electronic and software issues are resolved prior to installation:

1. Make sure the computer is operational by itself.
2. Insert computer into the docking station and verify that the computer is operating in the dock.
3. Interconnect entire assembly and verify start-up of all components, including other equipment (printers, modems, scanners, etc.)

Gamber-Johnson recommends positioning of all mounts and equipment in the vehicle prior to the actual install to verify that mounting locations are safe and practical.

IMPORTANT SAFETY INFORMATION FOR INSTALLERS

Safety is dependent on the proper installation and servicing of this docking station. It is important to read and follow all instructions before installing this product.

To properly install a Gamber-Johnson docking station you must have a good understanding of automotive electrical procedures and systems, along with proficiency in the installation and service of aftermarket vehicle equipment.

There are no adjustments required at any time of the electrical components within the docking station. **Opening the docking station will void the product warranty.**

During Installation:

DO NOT connect this docking station to the vehicle battery until:

1. All other electrical connections are made
2. Mounting of all components is complete
3. Verification that no shorts exist in the entire system

DO NOT install equipment or route wires or cords in the deployment path of any air bag.

When drilling into the vehicle, **DO** make sure that both sides of the surface are clear of anything that could be damaged.

CAUTION: *If wiring is shorted to the frame, high current conductors can cause hazardous sparks resulting in electrical fires or flying molten metal.*

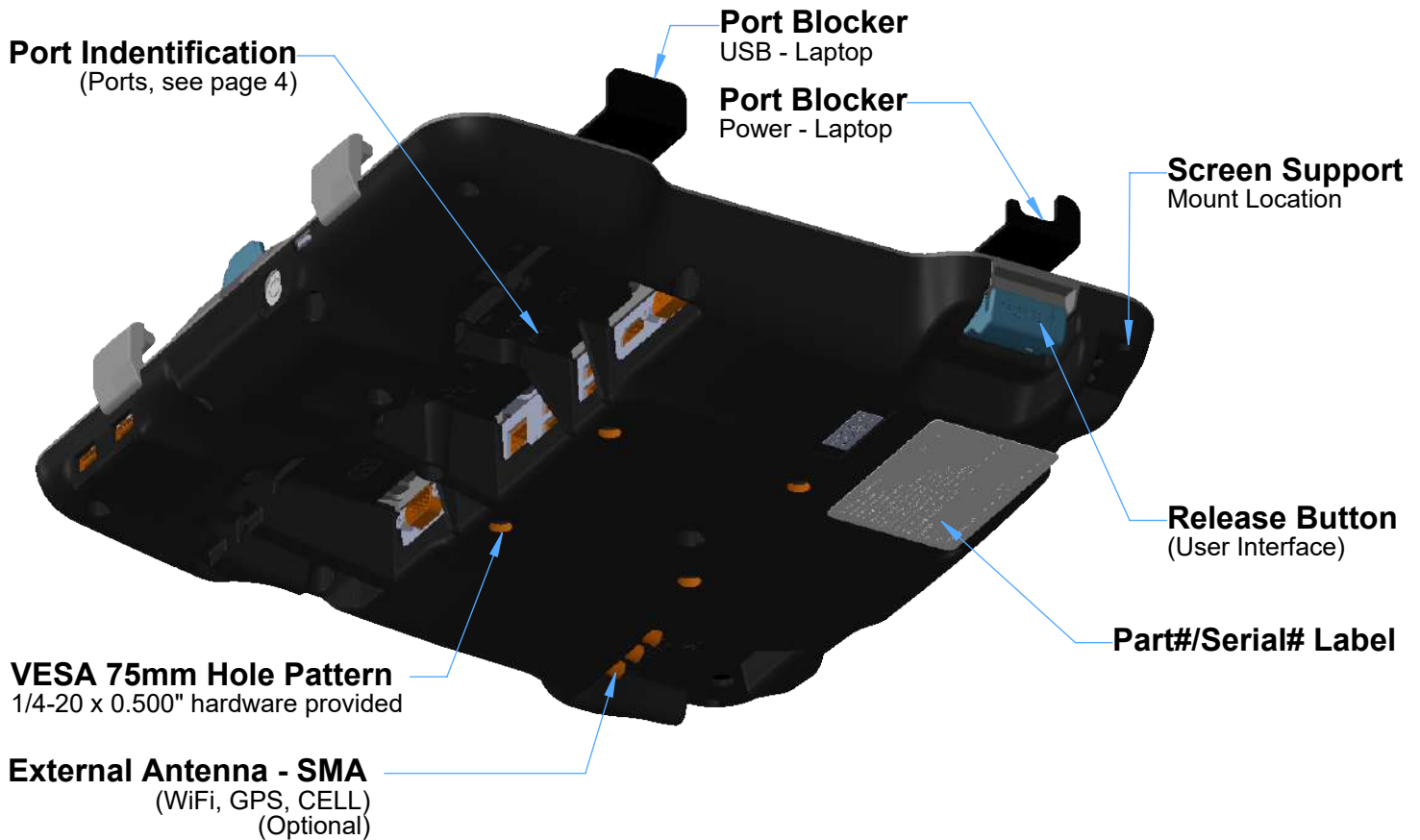
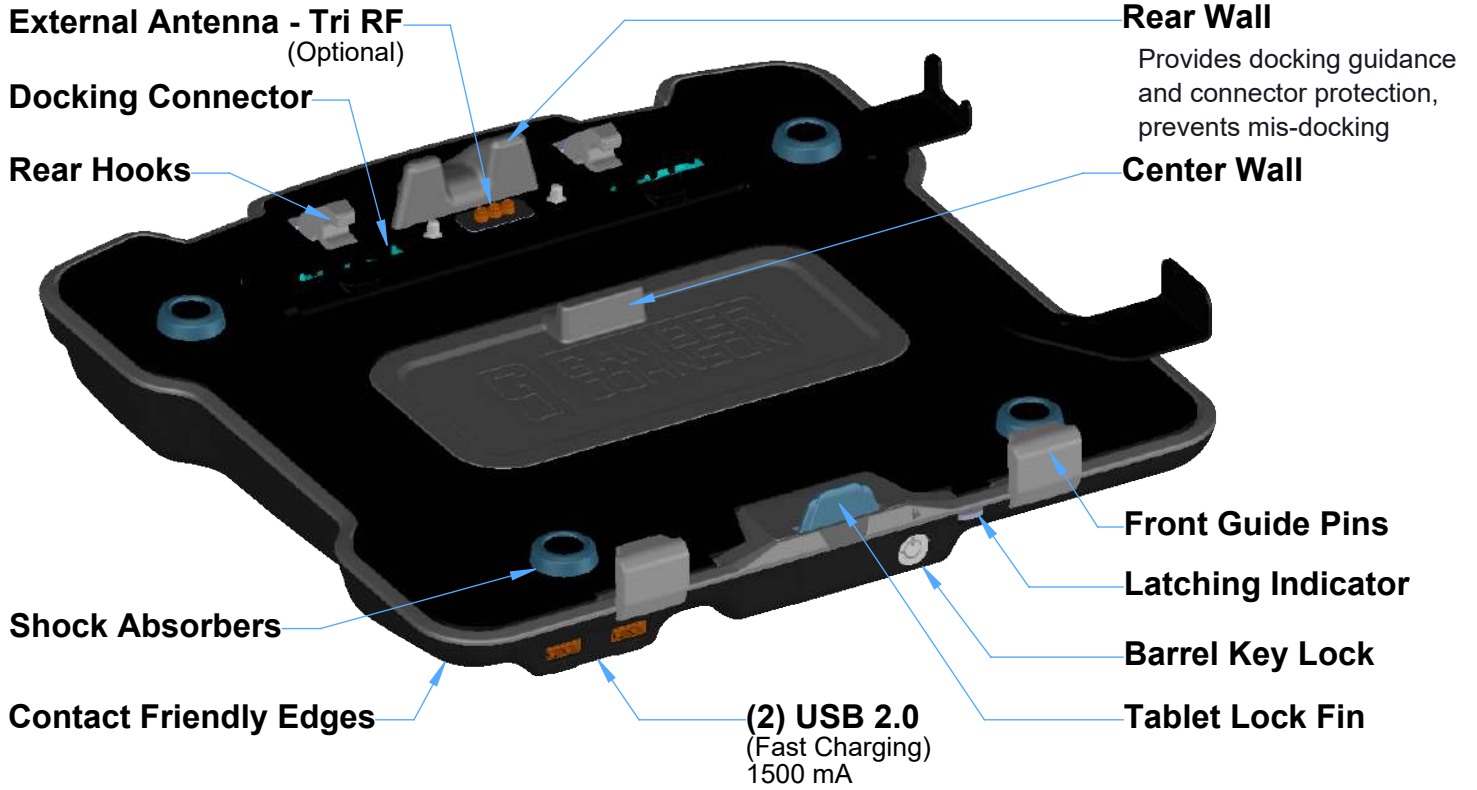
After installation:

Test the docking station to ensure that it is working properly.

File these instructions in a safe place and refer to them when performing maintenance or re-installing.

WARNING: *Failure to follow all safety precautions and instructions may result in property damage, serious injury, or death.*

FEATURE IDENTIFICATION



PORT IDENTIFICATION



Power Input: 19 Vdc

Serial

Ethernet (2)
(RJ45)

USB3.0
(Fast Charging)
1500 mA

USB3.0 (2)
900 mA

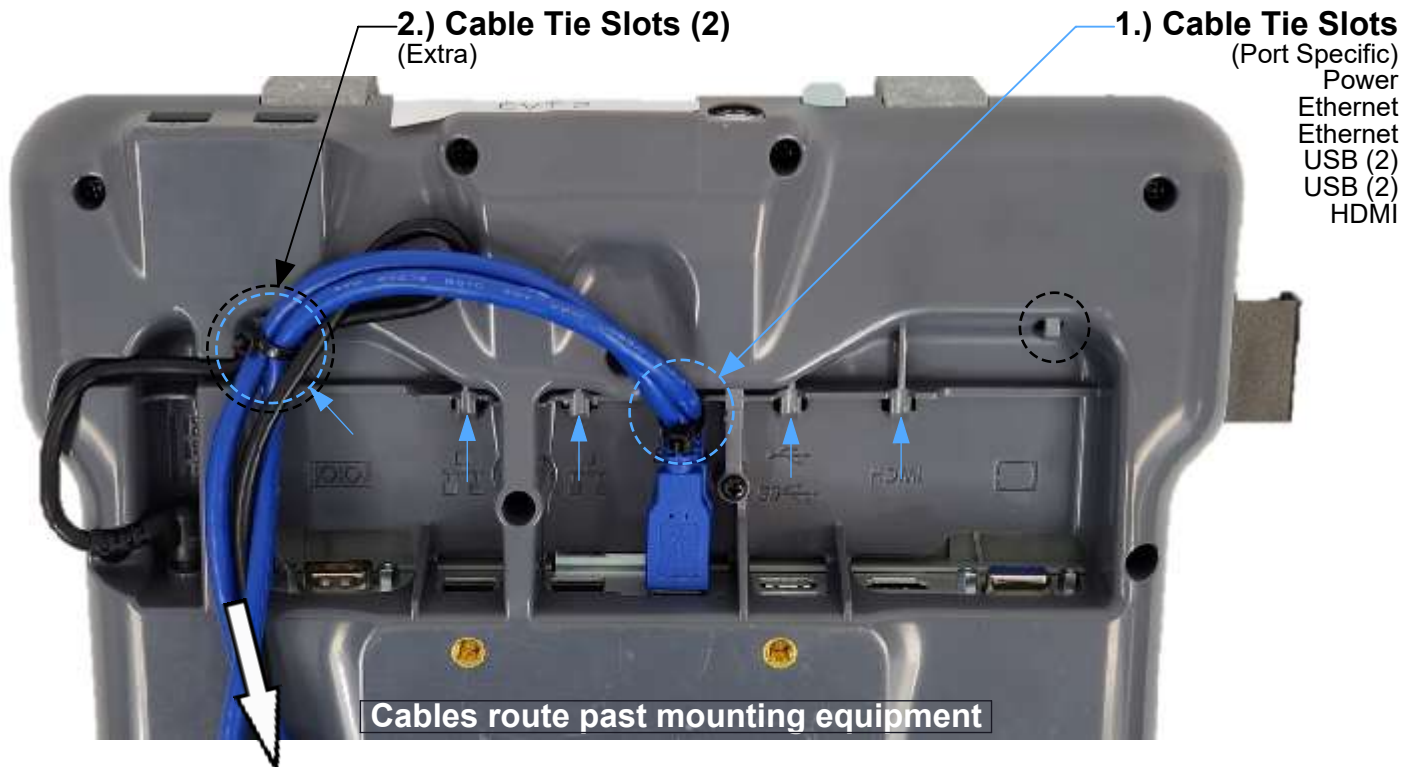
USB2.0
500 mA

HDMI

VGA

CABLE MANAGEMENT FEATURES AND PROPER INSTALLATION

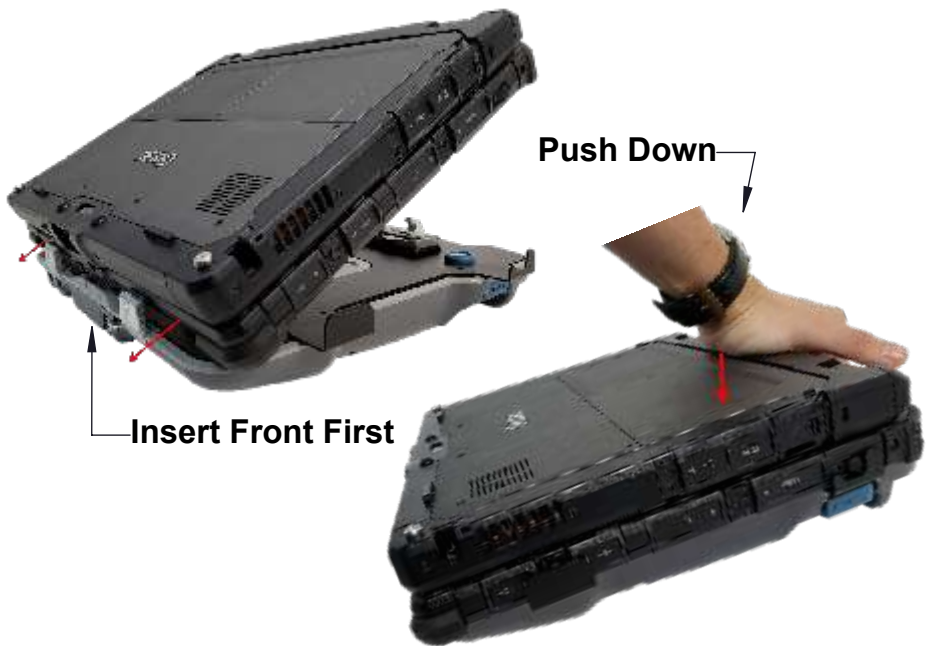
- 1.) Use Zip ties (provided) to secure each port cable to the specific strain relief feature on the dock
- 2.) Use Zip ties (provided) to secure bundled cables for improved routing - OPTIONAL



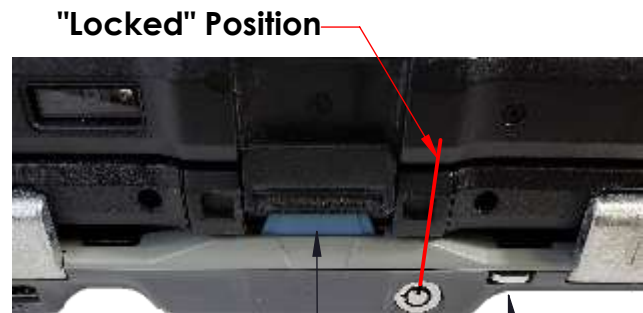
DOCKING AND UNDOCKING THE COMPUTER

OPERATION - DOCKING

1. Insert the front of the laptop into the front guide pines of the dock. The walls on the dock will guide the tablet into place.
2. Rotate the back of the laptop and push down, overcoming the resistance until an audible click is heard. The Latching Indicator will also slide inside the dock, signaling the "Latched" position.
3. Optional - With the dock in the "Latched" position, turn the lock to the "LOCKED" position (CW). This will lock the laptop in the dock, and secure the tablet if the screen is closed and latched.



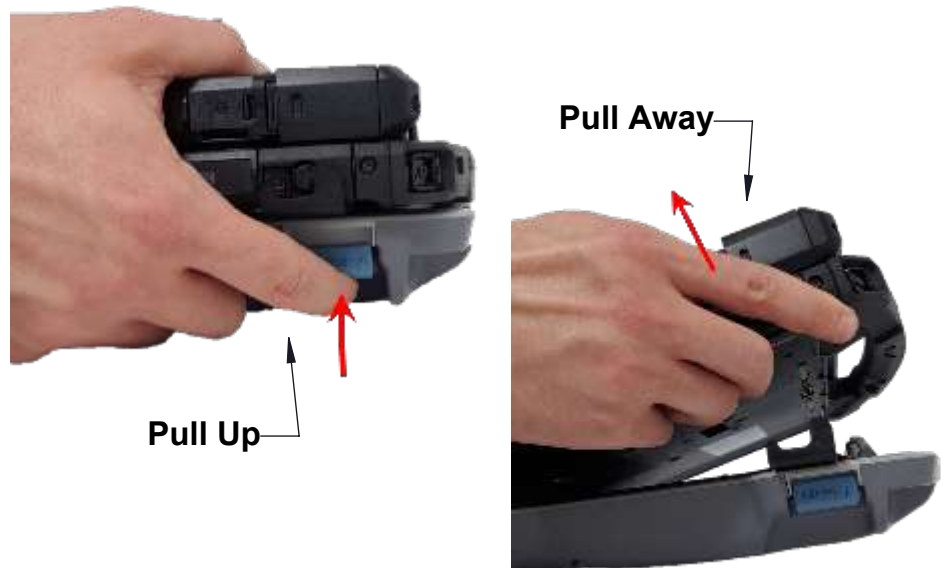
"Un-Locked" Position
"Un-Latched" Position



"Locked" Position
Tablet Lock Fin pops up after locking
"Latched" Position

OPERATION - UNDOCKING

1. Turn the lock to the "UNLOCKED" position (CCW). The blue Tablet Lock Fin will spring back down into the dock.
2. With your hand at the right corner of the laptop, pull up on the blue Release Button until the springs release the laptop.
3. Remove the laptop by pulling it away from the dock. This can be done with the same hand.



Screen Support Installation

Screen supports are recommended on all laptop dock/cradles in high-vibration environments.

- (1) screen support is included with each Getac K120 assembly, another may be purchased from www.GamberJohnson.com. Part Number: 7110-1270



Screen Support Mounting Locations

Use supplied #6-32 screws to attach included screen support to the left or right mounting location, do not over-torque screws.

Reccomended torque is 8-11 in/lbs.



Regulatory Certification Information

Regulatory Model #: 7160-1082

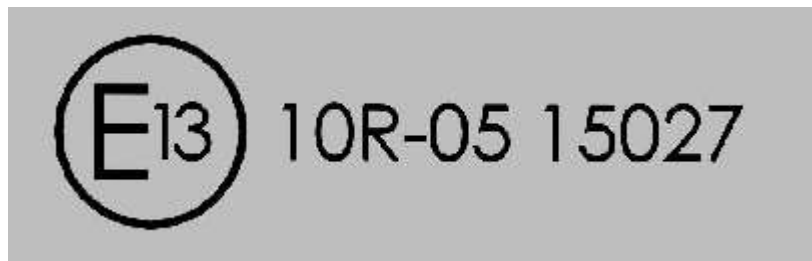
GJ Model #'s & Description:

7160-1082-00 Dock-Getac K120 Laptop-No RF
7160-1082-03 Dock-Getac K120 Laptop-Tri RF

Certifications:

- EN 55032: 2012/AC: 2013 Class B
- EN 50498: 2010
- E-mark

This device complies with Part 15 of the FCC Rules. Operation is subject to the following two conditions. (1) this device may not cause harmful interference, and (2) this device must accept any interference received, including interference that may cause undesired operation.



Gamber-Johnson LLC, 3001 Borham Ave.,
Stevens Point, WI, 54481, USA, 715-344-3482